

## Welcome

Eurowind Energy Limited is delighted to welcome you to the third round of community consultation, to update you on our proposals for Cairnoch Hill Wind Farm<sup>1</sup> (previously known as Carron Valley Wind Farm).

This is the third round of community consultation for the proposed Wind Farm, with the first round having been held in November 2024, and the second round having been held across March and April 2026.

This round of community consultation will be the last prior to the submission of a planning application for Cairnoch Hill Wind Farm, currently anticipated to be in late summer 2026.

## Site Location



The proposed Cairnoch Hill Wind Farm is located entirely within Forestry and Land Scotland (FLS) managed land at Cairnoch Hill, immediately north of the Carron Valley Reservoir and approximately 6km east of Fintry.

## About the Consultation Process

The design of the proposed Cairnoch Hill Wind Farm is well advanced and nearing completion. The Site has been subject to extensive review from our environmental and technical specialists, including landscape and visual, noise, ornithology, peat and hydrology, among others.

This community consultation event offers residents the opportunity to learn more about how the proposals for Cairnoch Hill Wind Farm have evolved since the previous public exhibitions held in 2024 and early 2026. It also highlights how community feedback has been considered and incorporated into the design for Cairnoch Hill Wind Farm.

<sup>1</sup> Name changed from Carron Valley Wind Farm to Cairnoch Hill Wind Farm based on feedback from our first round of public consultation. The mailbox [carronvalleywindfarm@eurowindenergy.com](mailto:carronvalleywindfarm@eurowindenergy.com) is still active and monitored as well as the new [cairnochhillwindfarm@eurowindenergy.com](mailto:cairnochhillwindfarm@eurowindenergy.com) mailbox.

[www.cairnochhillwindfarm.com](http://www.cairnochhillwindfarm.com)

## Project Timeline

1

### Pre-Planning (2024-2026)

Following this round of public consultation, the design of the Cairnoch Hill Wind Farm will be finalised and an Environmental Impact Assessment completed.

2

### Submit Planning Application & Await Decision (2026-2027)

A planning application will be submitted to Stirling Council in mid-late 2026. The planning application documents will be available for the public to view and comment on.

Stirling Council will then review the application, considering the views of stakeholders and the public, before making a decision on the application.

3

### Construction (2029-2030)

If approved, likely commencing in 2029/30.

4

### Operation (Up to 40 years)

Turbines are managed by a maintenance team, and operation is controlled by detailed planning conditions. Any community benefit fund or revenue share would run throughout the operation of the wind farm.

5

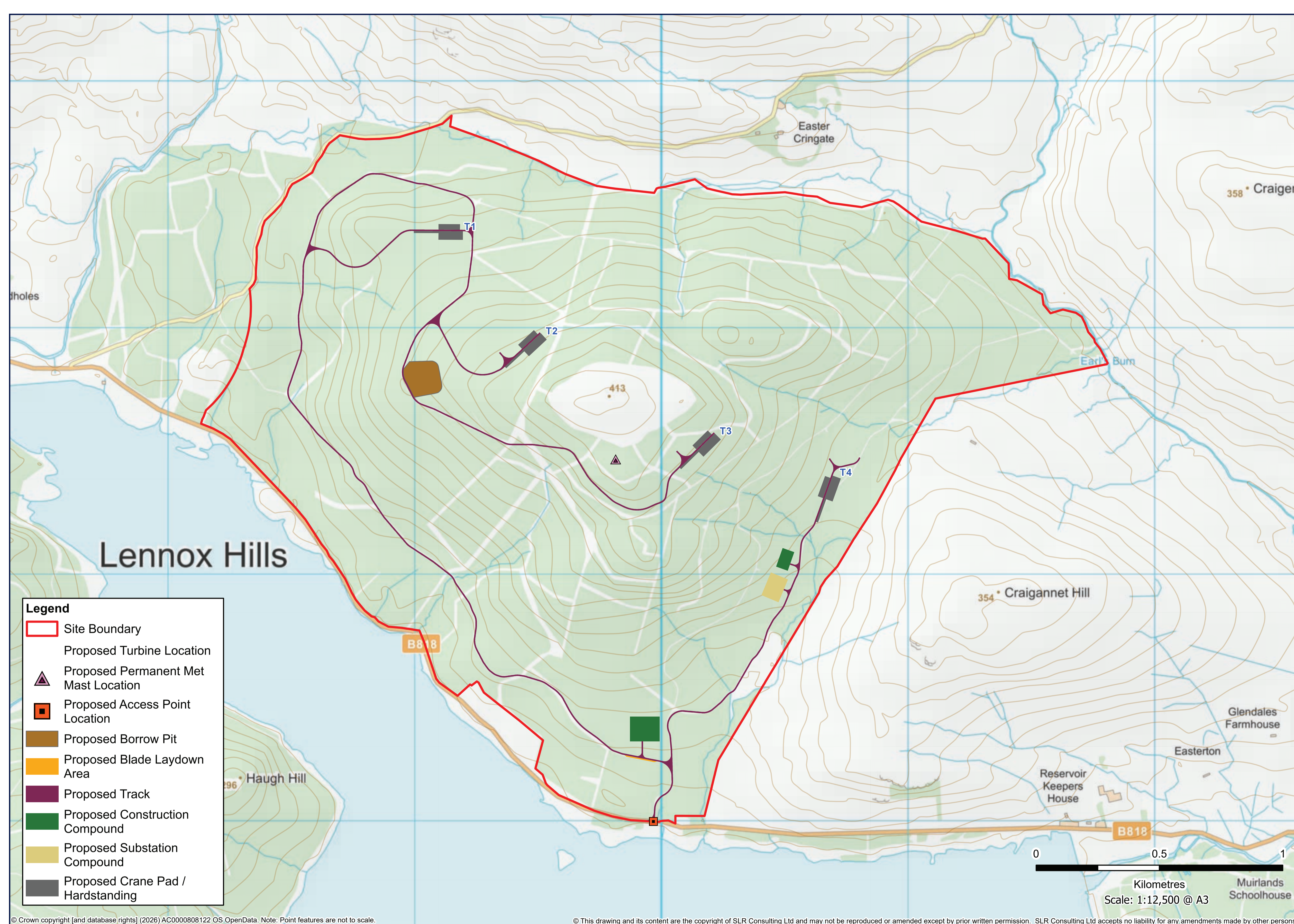
### Decommissioning

At the end of the 40 year operational period, if a new planning application is not submitted, the wind turbines would be removed and the Site restored. A financial guarantee / bond will be in place to cover the cost of decommissioning.

[www.cairnochhillwindfarm.com](http://www.cairnochhillwindfarm.com)

**Since our exhibitions in March / April 2026, we have made some changes based on feedback and environmental surveys.**

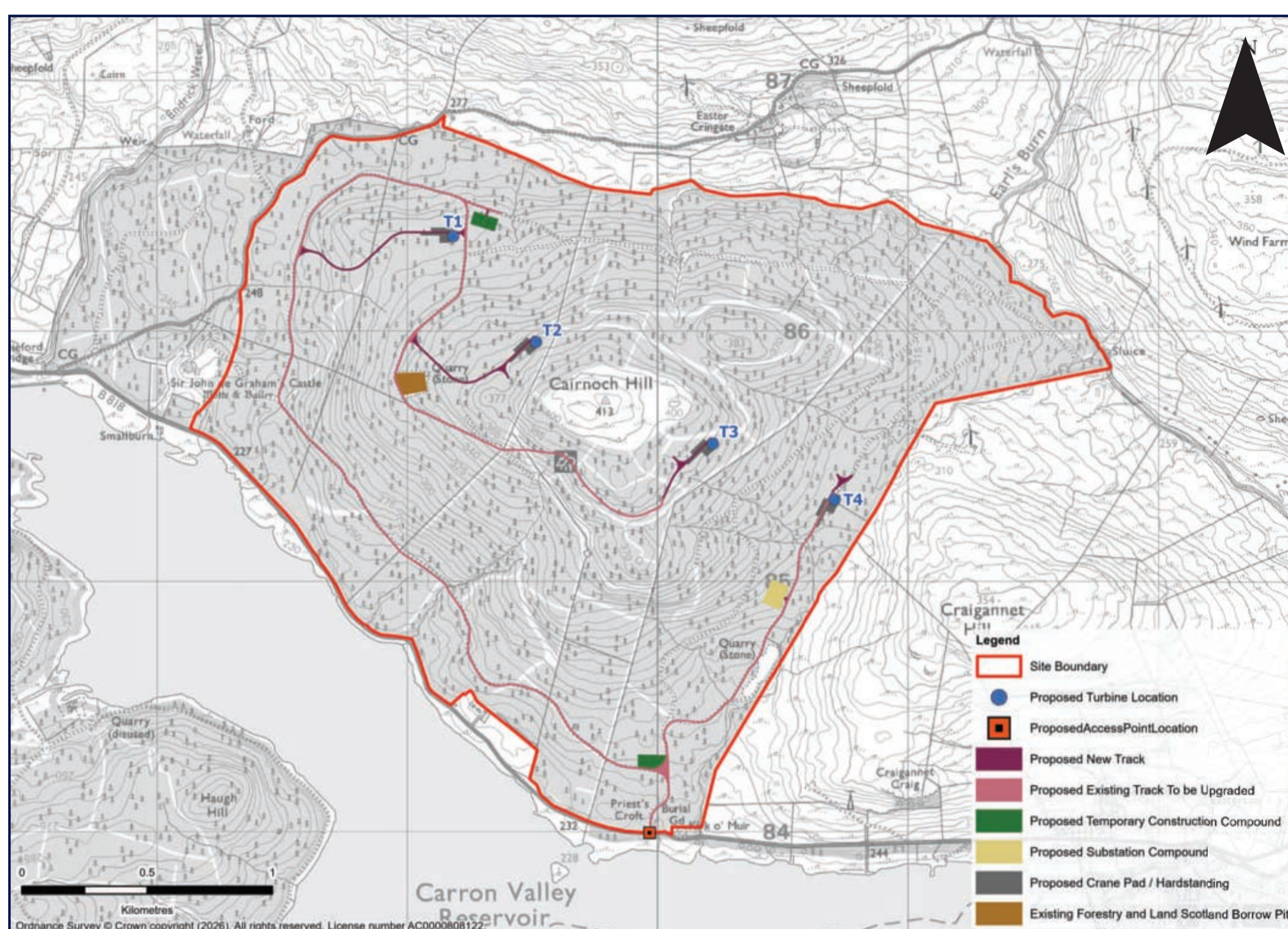
## Current Layout



Key design changes based on feedback and further environmental surveys:

## Previous Layout

- Wind turbine no.4 has been microsited slightly west;
- A permanent anemometry mast has been included (between turbines 2 and 3, where the temporary mast is currently located); and
- The size and location of temporary construction compounds has changed.



The revised design reduces the potential impacts of turbine no.4 on peat. The changes to the size and location of the temporary construction compounds is primarily to improve their functionality during construction.

The permanent anemometry mast would allow for data to be gathered e.g. weather conditions, in order to improve the operational efficiency of the wind turbines.

Further detail on the associated infrastructure to be included as part of the Cairnoch Hill Wind Farm is available on the information sheets provided (please ask a member of the exhibition team for an information sheet).

[www.cairnochhillwindfarm.com](http://www.cairnochhillwindfarm.com)

## Environmental Impact Assessment

The planning application for Cairnoch Hill Wind Farm will require a comprehensive Environmental Impact Assessment (EIA). The EIA will assess the potential environmental effects associated with the proposed development and present the findings in an EIA Report. An EIA is currently ongoing, and is being carried out by a team of independent consultants with extensive experience in wind farm development.

As part of this EIA process, consultation, advice and guidance is sought from a range of agencies, including Stirling Council, NatureScot, Scottish Environment Protection Agency, and Historic Environment Scotland, amongst others.

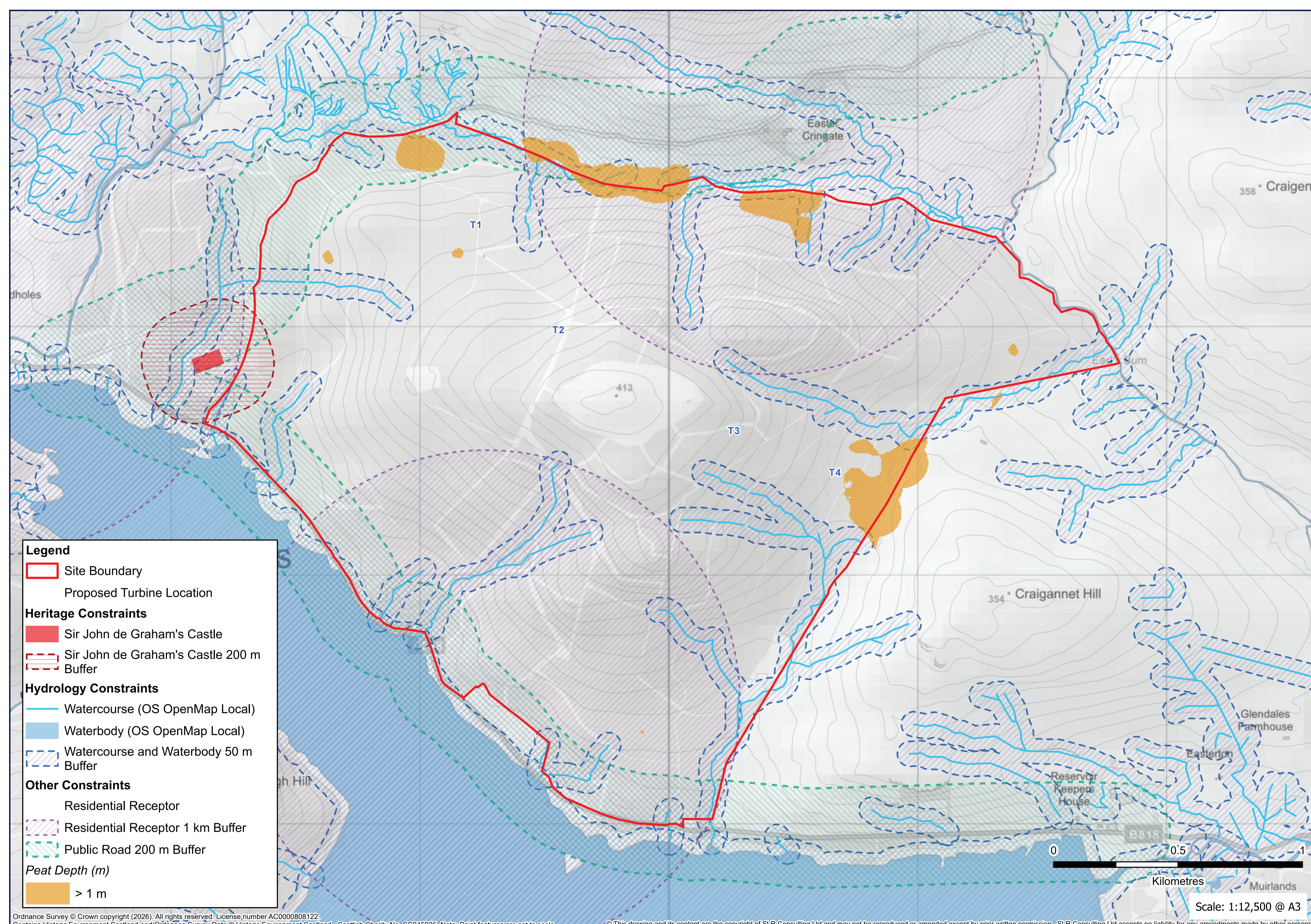
The EIA is looking at the potential effects of the proposed Cairnoch Hill Wind Farm on the following:

- Ecology and Ornithology;
- Landscape and Visual Amenity;
- Hydrology, Geology and Peat;
- Noise;
- Cultural Heritage and Archaeology;
- Traffic and Transport; and
- Other Issues e.g. aviation, shadow flicker, telecommunications, climate change, and natural disasters.

Detail on the survey and assessment work for the technical topics is available on the information sheets provided (please ask a member of the exhibition team for an information sheet).

## Constraints Mapping

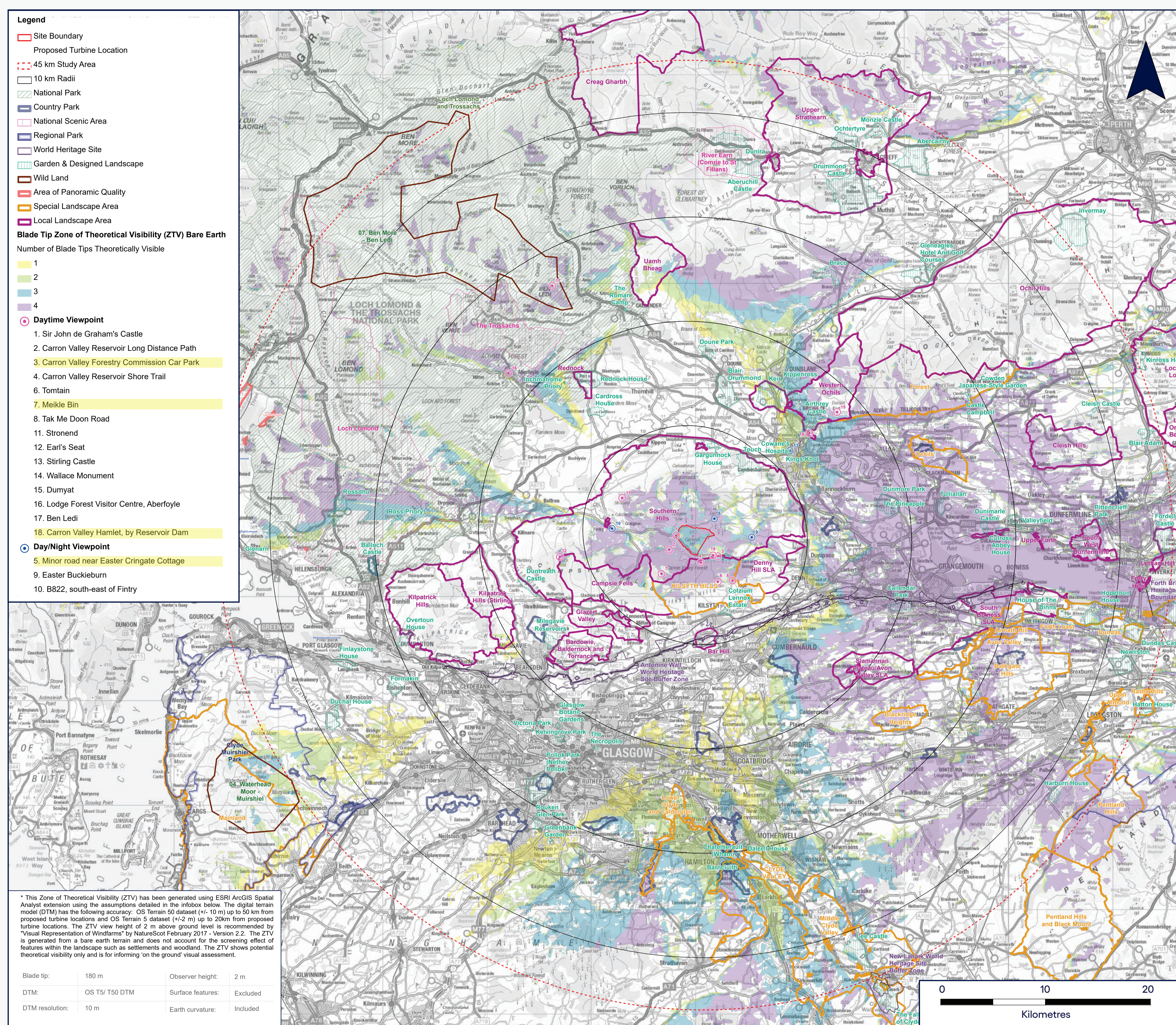
The following map shows some of the key constraints onsite, which have been taken into account during the design of the proposed development.



[www.cairnochhillwindfarm.com](http://www.cairnochhillwindfarm.com)

## What will Cairnoch Hill Wind Farm look like?

### Turbine Visibility



1 Turbine      2 Turbines      3 Turbines      4 Turbines

The coloured areas correspond with theoretical turbine visibility, not accounting for screening (buildings, forestry, etc.)

The Figure above shows the visibility of the proposed wind turbines within a 45km study area. It also identifies the viewpoints that have been selected for the Landscape and Visual Impact Assessment (LVIA). These viewpoints will form the basis of the assessment and are the locations from which photomontages will be produced and included in the EIA Report. We have worked with Stirling Council and NatureScot to finalise the viewpoint locations for the LVIA.

As part of the LVIA, a Residential Visual Amenity Assessment (RVAA) will be undertaken. This assessment will consider the residential properties that are closest to the proposed Cairnoch Hill Wind Farm and evaluate the extent to which proposed wind turbines would affect the visual amenity of each property.

The following boards provide visualisations from a selection of viewpoint locations (the selected viewpoint locations are shown in bold in the above Figure). It is important to note that the following visualisations are for illustrative purposes. While they assist in predicting the appearance of the proposed Cairnoch Hill Wind Farm, the perception of the proposed development to the human eye may vary, particularly during different weather conditions.

[www.cairnochhillwindfarm.com](http://www.cairnochhillwindfarm.com)

## Community Engagement & Support

We are committed to having a positive impact in the local communities where our projects are situated. By engaging with local residents and community leaders, we want to ensure that our investment provides the maximum possible benefit to a local area, for both new and existing community projects and initiatives.

### ***Community Benefit Fund***

The community benefits from the Cairnoch Hill Wind Farm includes the creation of a community fund of up to **£150,000** per year (subject to change based on final candidate turbine choice, calculated at £5,000 per installed MW of wind capacity).

During the first and second phases of consultation we asked for suggestions for how the community fund could be spent. Some of the most common responses received across the public consultations include the following. We'd now like to understand which of these options you consider to be the highest priority.

- Lower electricity costs for locals
- Support for local infrastructure
- Support for youth and sports
- Education and skills
- Funding for community transport
- Environmental and nature projects
- EV charging stations
- Support for local charities and groups

Please complete our consultation feedback form and let us know which of these options you prefer – and any other ideas you have for how this money could be spent.

The information gathered will be shared with the organisation responsible for managing the community benefit fund (once appointed). Please note that Eurowind will not be involved in the final decisions on how the community benefit fund will be spent.

### ***Supply Chain Opportunities***

The Cairnoch Hill Wind Farm will create significant opportunities for local businesses during the construction and operation of the development. If our application is approved, we will work in partnership with business groups and organisations to engage local suppliers, establish a supplier database and hold supplier open days. If you want to find out more about supply chain opportunities, please email us at [cairnochhillwindfarm@eurowindenergy.com](mailto:cairnochhillwindfarm@eurowindenergy.com).

[www.cairnochhillwindfarm.com](http://www.cairnochhillwindfarm.com)

## About Eurowind Energy Limited (The Developer / Applicant)

Established in Denmark in 2006, Eurowind Energy is one of Europe's leading renewable energy developers, with operations in 16 countries across Europe.

Eurowind Energy employs an experienced UK team based in Glasgow that was established in 2021. Eurowind Energy UK has one operational wind farm and one consented 16MW solar farm at Howpark, in the Scottish Borders. As well as the recently consented flagship project Uisenis Wind Farm on the Isle of Lewis (189MW) and a growing development portfolio of over 2.7GW across the UK.

Eurowind Energy develop, construct, and operate wind, solar photovoltaic and 'Power to X' assets across Europe. We are dedicated to local long term solutions, and we believe that the future of energy supply is renewable, clean, and sustainable. Projects are developed in close collaboration with a range of local stakeholders to develop smart schemes that work for all. Eurowind Energy only engages in projects that they, themselves, want to invest in.

## Feedback, Comments & Questions

We encourage you to view the materials on display and speak to the project team. Please ask questions and raise any feedback you may have. Following your discussions with the project team, if you have any further questions or feedback, please complete one of the provided feedback forms and give to a member of the project team or provide feedback via email at:

[cairnochhillwindfarm@eurowindenergy.com](mailto:cairnochhillwindfarm@eurowindenergy.com)

Information can also be found on our project website:

[www.cairnochhillwindfarm.com](http://www.cairnochhillwindfarm.com)



[www.cairnochhillwindfarm.com](http://www.cairnochhillwindfarm.com)