

Wireline drawing

View flat at a comfortable arm's length



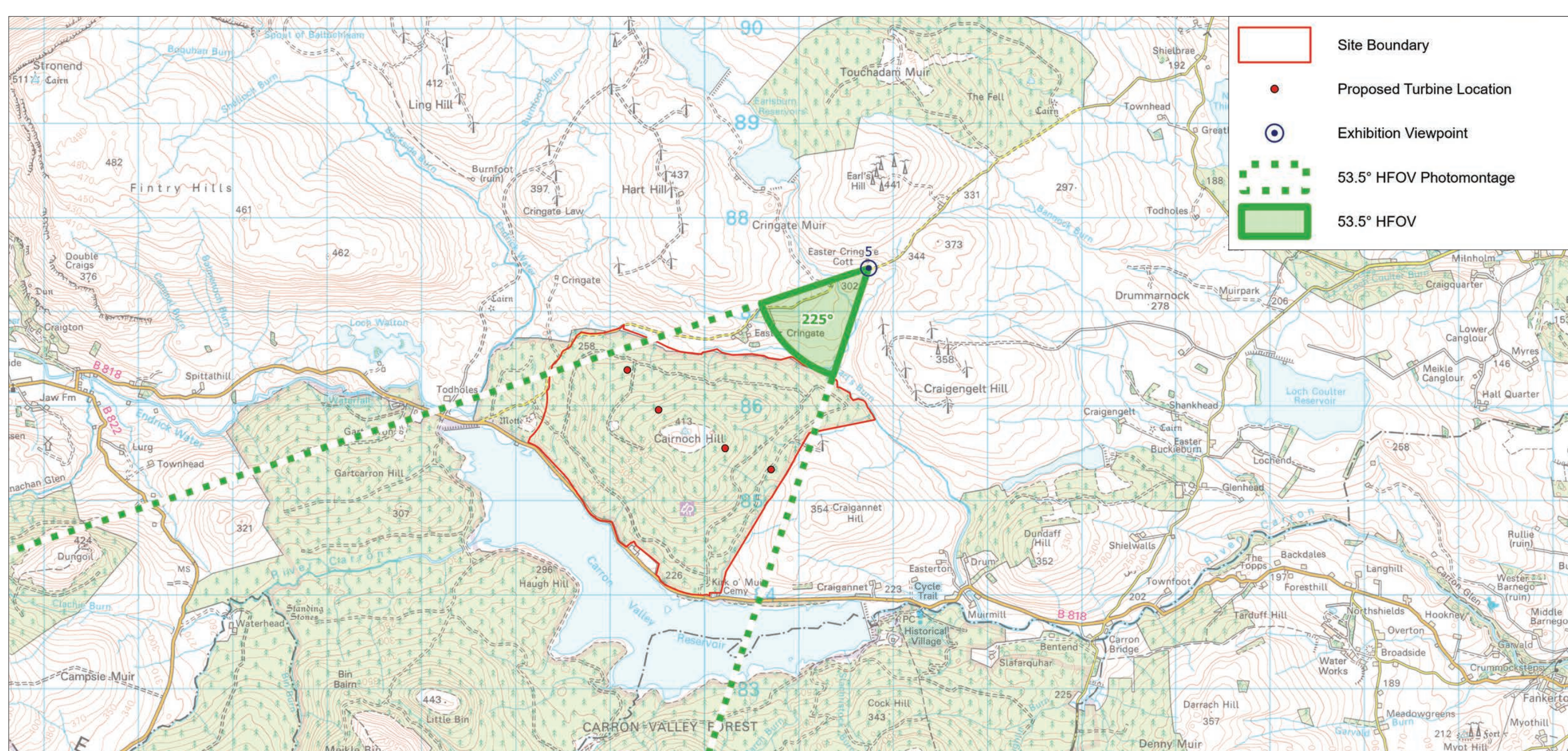
Baseline Photograph

View flat at a comfortable arm's length



Photomontage: Proposed Development

View flat at a comfortable arm's length



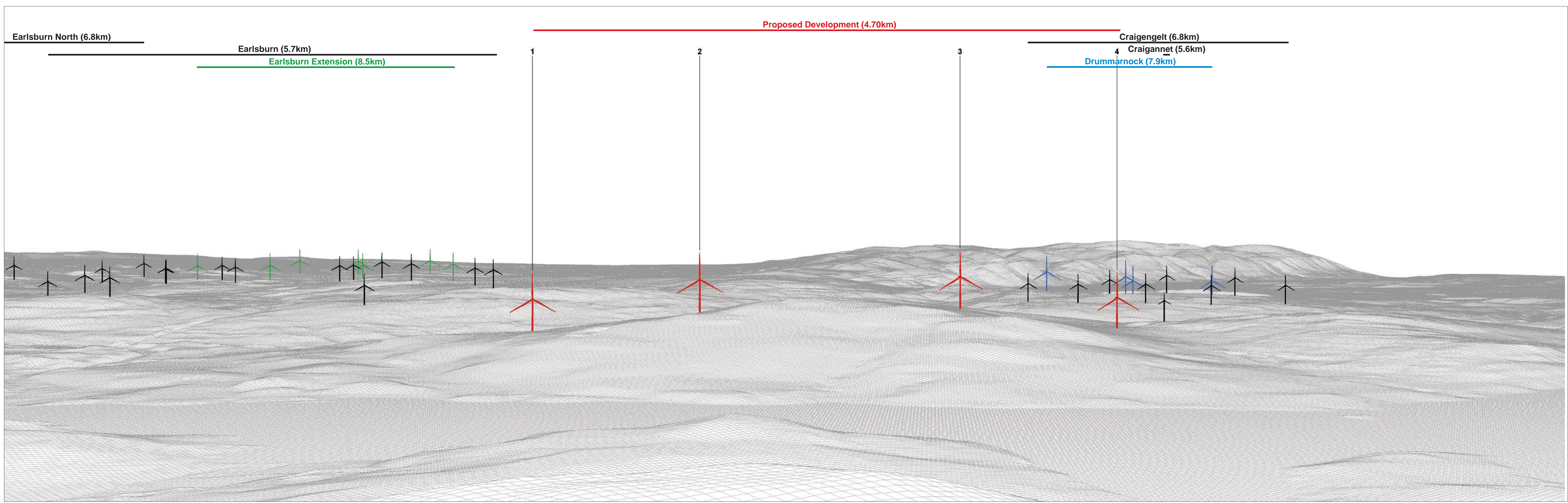
Viewpoint 5: Minor road near Easter Cringate Cottage

OS reference: 271792 E 687454 N
 Eye level: 313.8 mAOD
 Direction of view: 225°
 Nearest turbine: 2.39 km

Horizontal field of view: 53.5° (planar projection)
 Principal distance: 812.5 mm
 Paper size: 1189 x 841 mm (A0)
 Correct printed image size: 820 x 260 mm

Camera: Canon EOS 6D Mark II
 Lens: EF50mm f/1.4 USM
 Camera height: 1.5 m
 Date and time: 25.06.2024 12:42

Eurowind Energy™



Wireline drawing

View flat at a comfortable arm's length



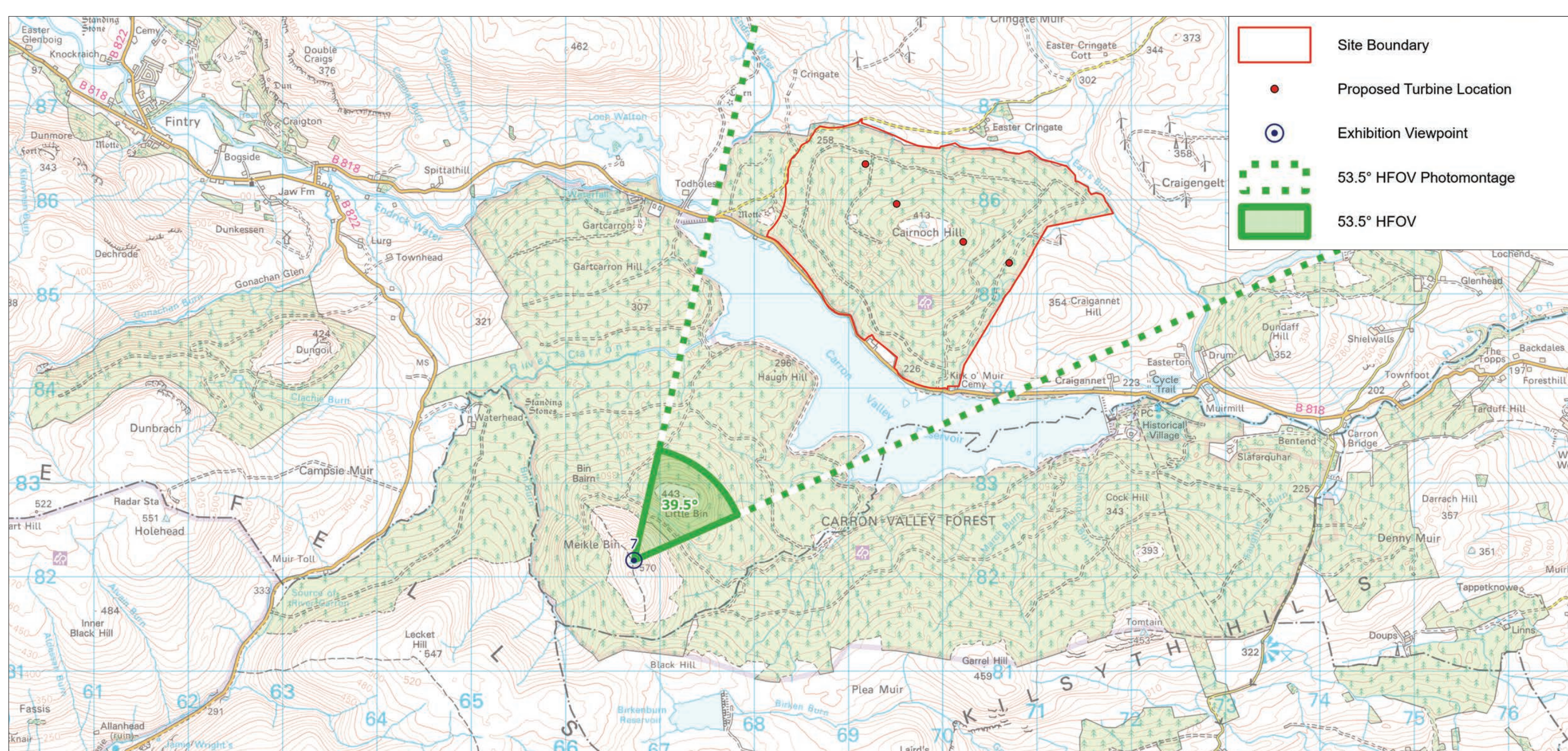
Baseline Photograph

View flat at a comfortable arm's length



Photomontage: Proposed Development

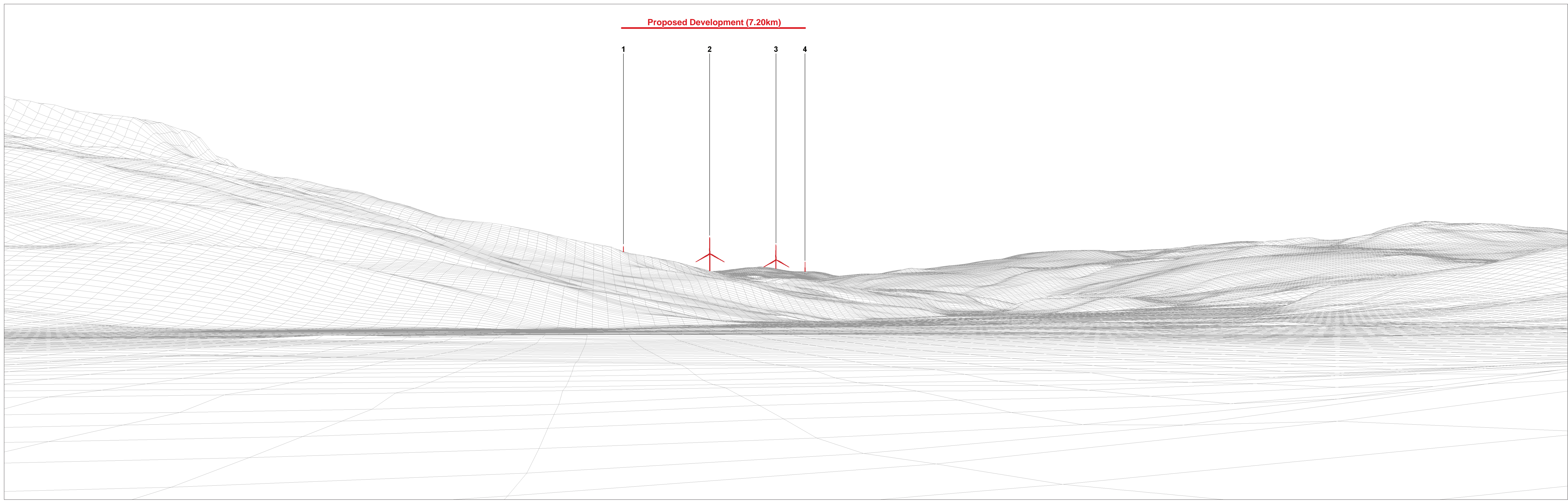
View flat at a comfortable arm's length



Viewpoint 7: Meikle Bin

| | | |
|---------------------------------|---|---------------------------------|
| OS reference: 266725 E 682177 N | Horizontal field of view: 53.5° (planar projection) | Camera: Canon EOS 6D Mark |
| Eye level: 570.3 mAOD | Principal distance: 812.5 mm | Lens: EF50mm f/1.4 USM |
| Direction of view: 39.5° | Paper size: 1189 x 841 mm (A0) | Camera height: 1.5 m |
| Nearest turbine: 4.70 km | Correct printed image size: 820 x 260 mm | Date and time: 27.09.2024 13:04 |

Eurowind EnergyTM



Wireline drawing

View flat at a comfortable arm's length



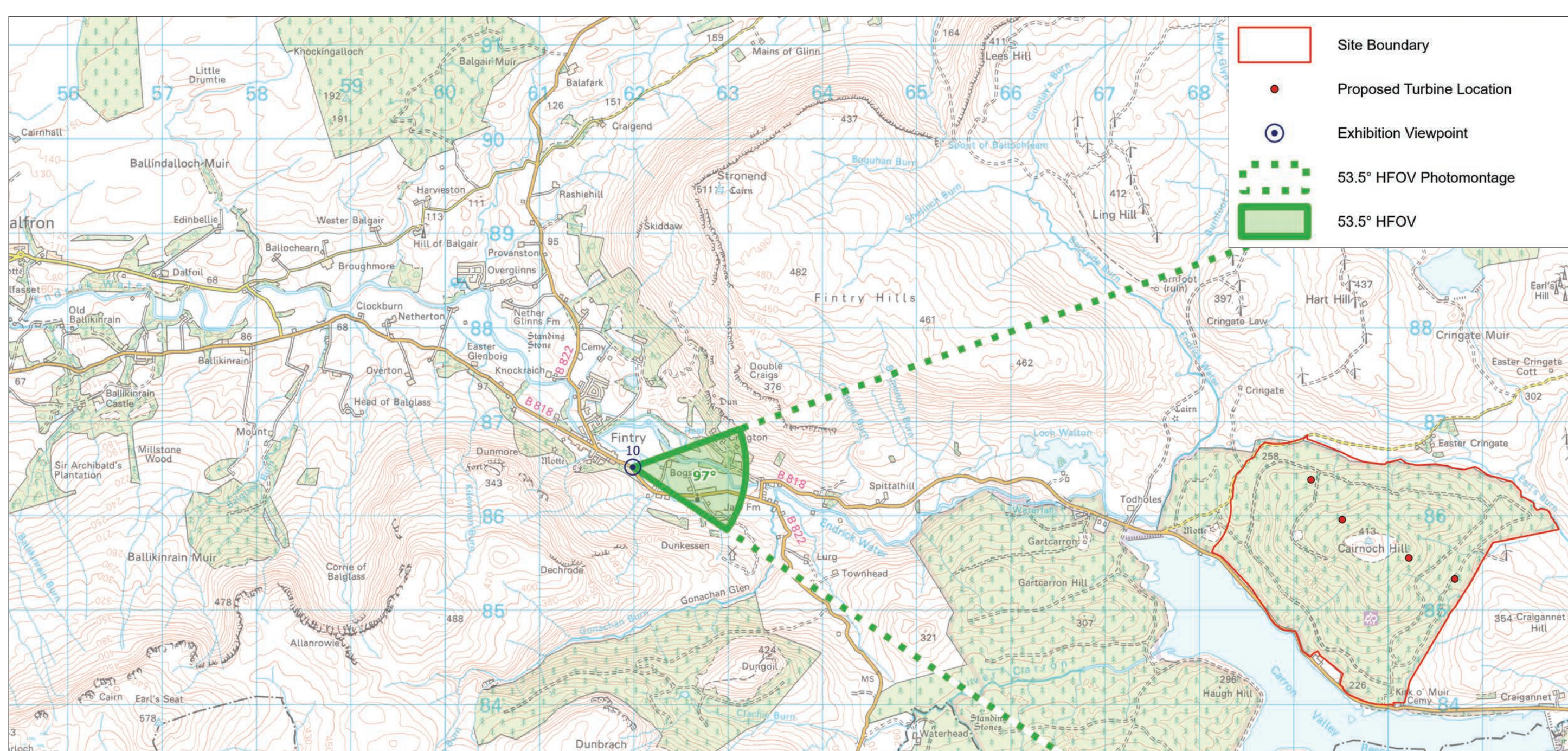
Baseline Photograph

View flat at a comfortable arm's length



Photomontage: Proposed Development

View flat at a comfortable arm's length



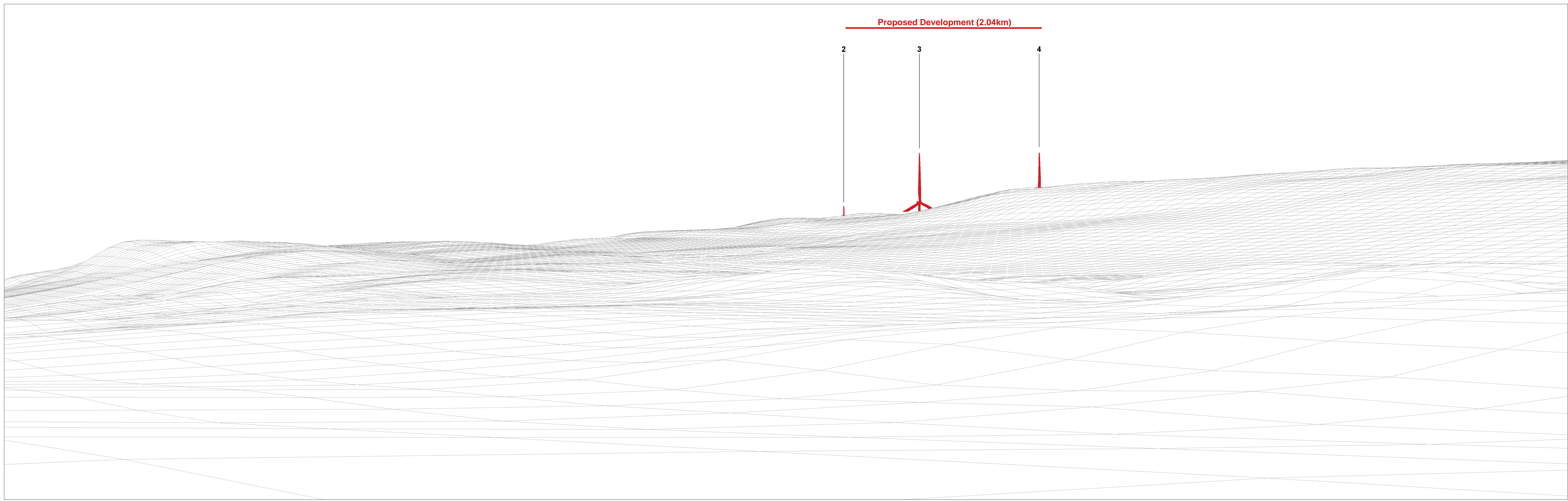
Viewpoint 10: B822 South East of Fintry

OS reference: 261984 E 686508 N
 Eye level: 90.2 mAOD
 Direction of view: 97°
 Nearest turbine: 7.20 km

Horizontal field of view: 53.5° (planar projection)
 Principal distance: 812.5 mm
 Paper size: 1189 x 841 mm (A0)
 Correct printed image size: 820 x 260 mm

Camera: Canon EOS 6D Mark II
 Lens: EF50mm f/1.4 USM
 Camera height: 1.5 m
 Date and time: 25.06.2024 16:42

Eurowind Energy™



Wireline drawing

View flat at a comfortable arm's length



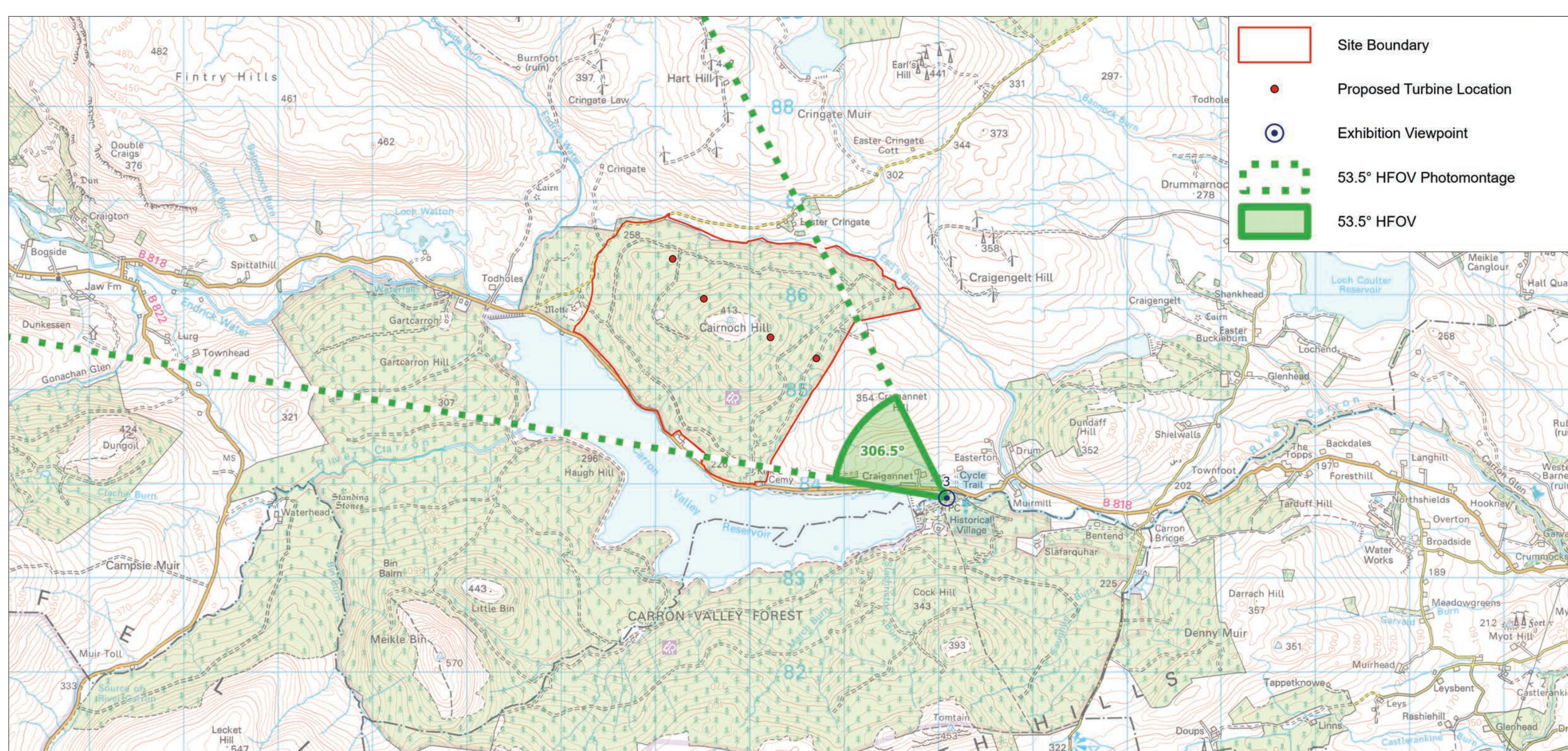
Baseline Photograph

View flat at a comfortable arm's length



Photomontage: Proposed Development

View flat at a comfortable arm's length



Viewpoint 3: Carron Valley Forestry Commission Car Park

OS reference: 272131 E 683865 N
 Eye level: 215.7 mAOB
 Direction of view: 306.5°
 Nearest turbine: 2.04 km

Horizontal field of view: 53.5° (planar projection)
 Principal distance: 812.5 mm
 Paper size: 1189 x 841 mm (A0)
 Correct printed image size: 820 x 260 mm

Camera: Canon EOS 6D Mark II
 Lens: EF50mm f/1.4 USM
 Camera height: 1.5 m
 Date and time: 25.06.2024 15:30

Eurowind Energy™